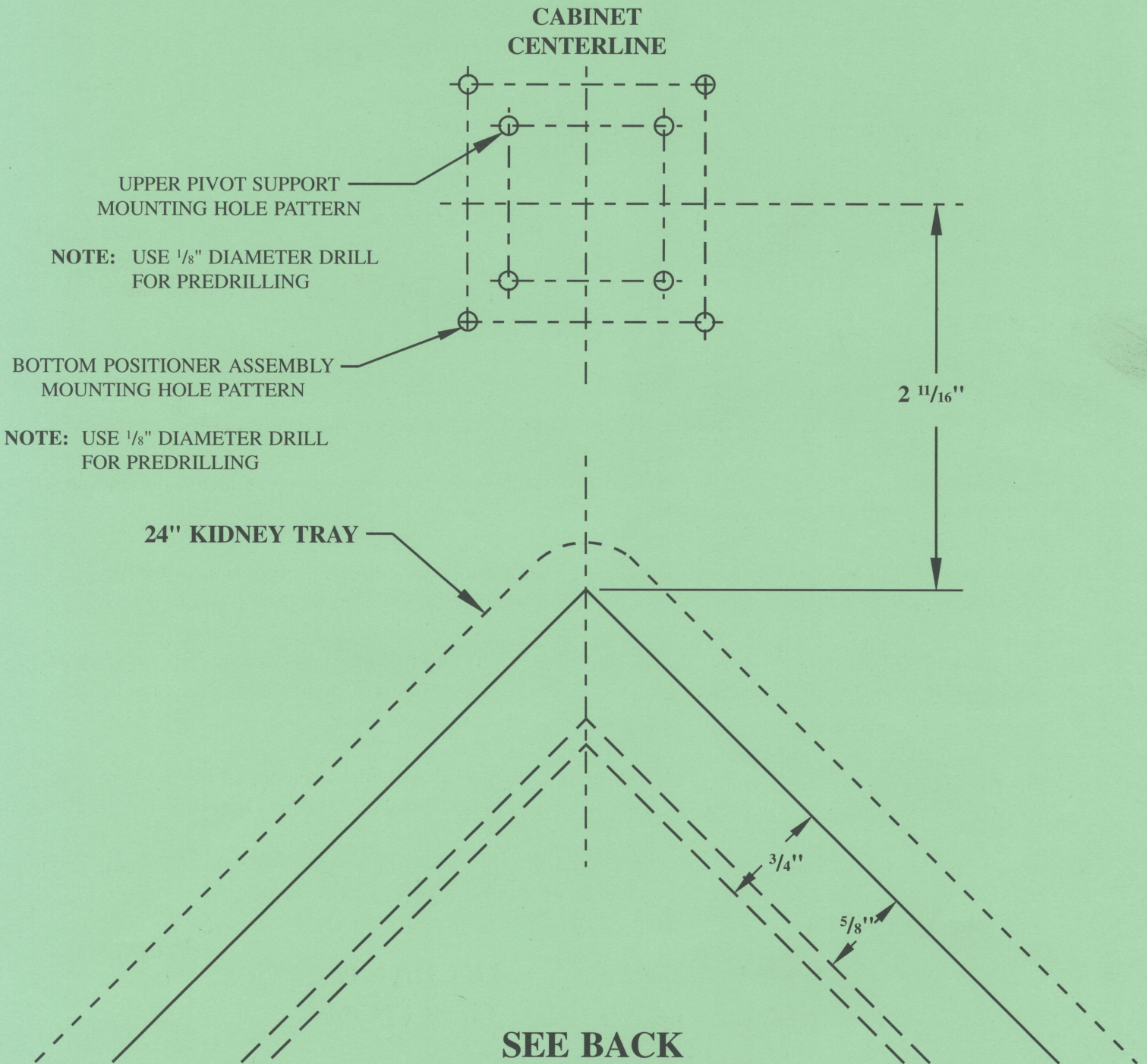


**24" REVOLVING KIDNEY  
 REV·A·SHELF TEMPLATE**

**NOTES:**

1. Be sure to check for adequate clearance at back of shelf prior to drilling holes.
2. Any inside re-enforcement must be accounted for. (Minimum dimensions noted).

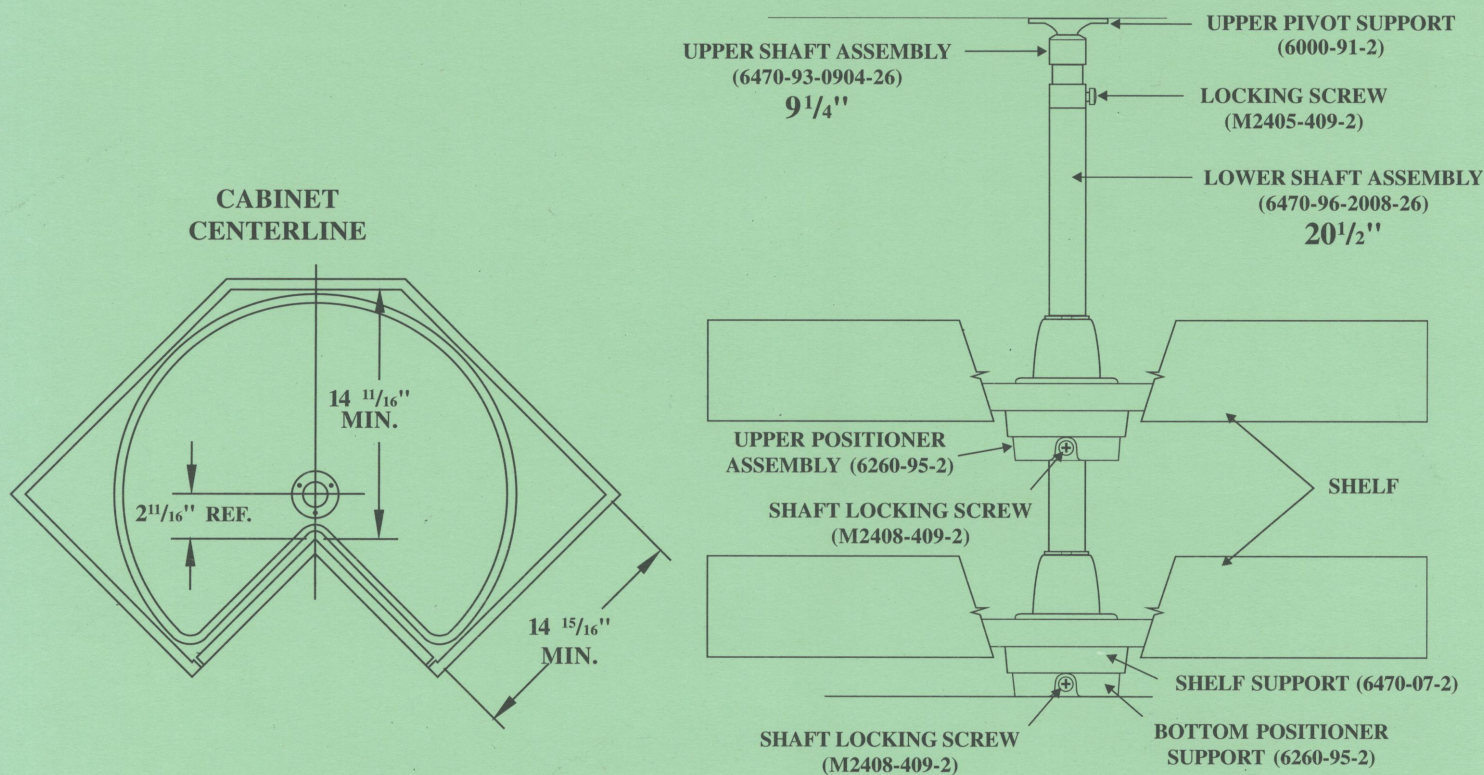


**SEE BACK  
 FOR INSTRUCTIONS**

**PRINTED IN U.S.A.**

# INSTALLATION INSTRUCTIONS

## INDEPENDENTLY ROTATING KIDNEY TRAY



1. Locate mounting holes with template provided and install bottom positioner on cabinet floor with four (4)  $\frac{3}{4}$ " x #8 (F1208-13-2) oval head screws. **NOTE: Shaft Locking Screw must face cabinet opening.**
2. Locate mounting holes with template provided and install upper pivot support on cabinet top with four (4)  $\frac{1}{2}$ " x #8 (F0808-26-2) truss head screws.
3. Slide upper shelf onto shaft. Slide second positioner onto shaft and temporarily tighten screw with positioner approximately 15 inches from bottom end of shaft. Slide bottom shelf onto shaft.
4. Slide upper shaft assembly into upper end of shaft. Loosely install locking screw. Insert shaft assembly in bottom positioner assembly. Lift upper shaft assembly to engage in upper pivot support. Tighten locking screw.
5. Adjust lower shelf position by turning shaft until tray is centered on cabinet opening. Slide lower tray up shaft and tighten lower shaft locking screw. Lower tray, check centering and adjust if necessary.
6. Adjust upper shelf positioner by grasping and supporting upper positioner assembly while loosening locking screw. Rotate positioner and shelf into alignment and securely tighten locking screw.

**SEE TEMPLATE ON BACK  
SIDE FOR HOLE LOCATIONS**